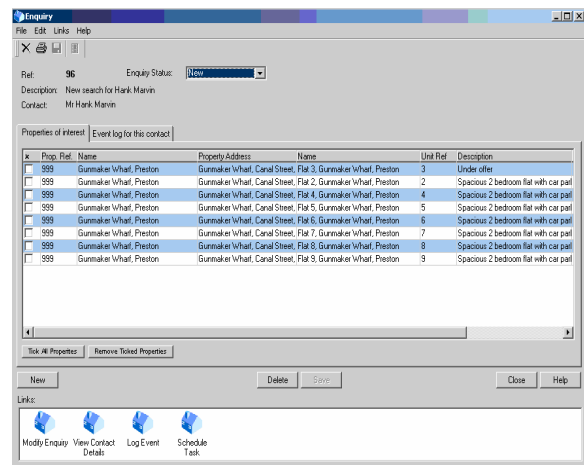


Enquiry Management

If your property team is responsible for letting or selling commercial or residential units in your portfolio, then they will know how difficult a task it can be to keep track of exactly what is happening at every stage of the process from initial enquiry through to completion.

The BlueBox Enquiry Management module allows private or commercial contacts to be recorded with details of their requirement. These requirements can then be matched against available property or space. When a successful match has been achieved, the enquirer may receive a report by email or in hard copy of the properties that meet their requirement whereupon viewings can be arranged and completions confirmed as a series of user definable stages.



Integrated Document Management allows all communication with interested parties to be recorded whether in letter, fax or email format, so all information relating to the sale or lease is secure and accessible.

The Enquiry Management module can be used across a network or it can be integrated with an organisations web site as required.

- Integrated Document Management.
- Contact Management.
- Requirements Matching.
- Web Enabled.
- Sales and Statistics Reporting.