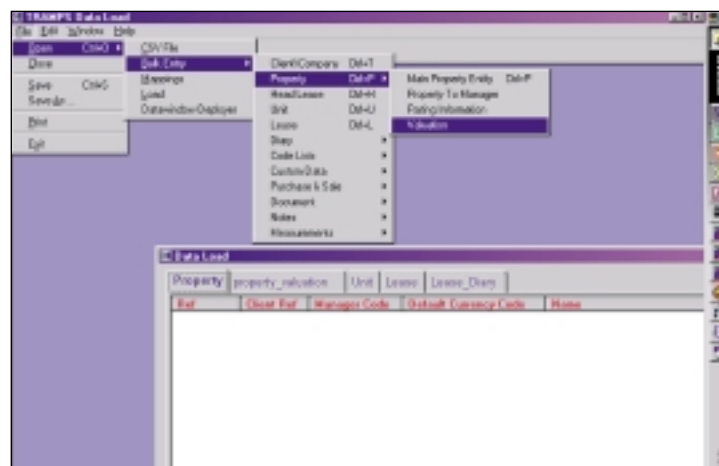


## Structured Data Load

Data is fundamental to any organisation. It supports informed decision making, which enables formulation of strategy, which in turn drives a business forward to success. At the heart of any successful system implementation is the ability to transfer data from old to new in a controlled and risk-averse environment.

The Structured Data Load module is purpose-designed to achieve this. You can upload your data safely in a predetermined format and populate designated tables in the TRAMPS database at the click of a button. Once defined, the upload is fast, effective and reduces the risk of errors due to manual intervention or update. The module provides for the upload of both property and accounting records as standard, but additional facilities can be provided on a bespoke basis to provide a completely flexible solution. Many Trace Solutions clients use Structured Data Load to assist them in the fast entry of new data when they acquire a new property or portfolio. Bulk data entry can now be performed without the time consuming manual input and the resulting difficulties created by human error.



- ◆ Property
- ◆ Unit
- ◆ Tenant
- ◆ Lease
- ◆ Headlease
- ◆ Rent review
- ◆ Lease expiry
- ◆ Options
- ◆ Property diary
- ◆ Accruals & prepayments
- ◆ Transfers & adjustments
- ◆ Opening balances
- ◆ Property expense journals